

JANUARY 2022

Trinity Lutheran Church

PO Box 788, 6810 Hwy 2 W, Cass Lake, MN 56633

tlclsecretary@gmail.com 218-335-6393

like/follow us on Facebook

(Trinity Lutheran Church of Cass Lake)

WEB site: tlccasslake.com

Pastoral Reflections

IN THANKSGIVING

“Sing praise to the Lord, all you faithful; give thanks in holy remembrance.” Psalm 30:4

For many years, I have spent Christmas at my parents' celebrating the birth of our Savior with most of my siblings and nieces and nephews. It was often a full house with a lot of energy and excitement, especially as the kids tore into their presents. One thing I've observed in those rituals, as well as on other occasions and in different contexts, is how parents direct their children to respond in gratitude. “What do you say?” they prompt, and in response out comes a sincere “Thank you!”

Expressing gratitude doesn't always come naturally to us. We have to learn it over and over again. Even as adults we need reminders because this simple act is truly an important component in our relationships with others, including God.

So, in the spirit of practicing gratitude, I would like to take this time to say: Miigwech, Gracias, Asante, Grazie, Merci, Danke, Tack, Kiitos, Takk, Dank Je, Domo Arigatou, Spasiba, Xie Xie, תודה, Ευχαριστώ, Thank you!!

- To Connie Miller, Terry Baltuff, Patti Horazuk, Susan Schulz, Jane Christianson (our executive committee), OJ (Orin) Jensen, Kathy Baltuff, Laurie Buehler, Gene Patten (our Worship & Education board), Lon Christianson, Terry Nord, Bill Schulz and Neil Ramsey (our Trustee board) for your caring, supportive and faithful congregational leadership this past year.
- To Joyce White, our office administrator, who diligently and good-naturedly tends to the many tasks of the office, especially when things become more hectic.

- To Wayne Hoff, our musician, who steadily and patiently rides the waves of worship adaptation with us as we experiment, both in times of failure as well as success.
- To Rocky Wimme, our custodian, whose dedication to weekly care of our building make it an inviting space for all who enter.
- To Lon Christianson, OJ (Orin Jensen), and Connie Miller who slogged yet again through COVID information and updates with me throughout 2021 to make decisions and implement protocols, which was invariably difficult and tiring work at times.
- To OJ (Orin) Jensen, Connie Miller, Lon Christianson, Patti Horazuk, Bev Larson, and Howard Hirdler for being willing to stretch yourselves a little as recorders while we explored ways to offer online worship.
- To Danny Struecker, who attentively works behind the scenes adding a seasonal spark to our entryway and keeping our candles trim and ready for worship.
- To Laurie Buehler, Mary Nord, and Tom & Pam Shepherd for developing a vision for Lent and Advent last year, and thereby made those seasonal observances richer.
- To Roy Blackwood, Laurie Buehler, and Gary Larson who utilized their gift of voice week after week so we could still integrate music into worship while trying to maintain some safety measures during COVID
- To Lori Humphrey, Jane Christianson, and Connie Miller who bore the bulk of planning our 100th anniversary celebration in the midst of a pandemic.
- To Carolyn Ross, Priscilla Smith, Bev Larson, Dwight Overbeek, Lori Humphrey, Laurie Buehler, Howard Hirdler, Kathy & Terry Baltuff, Sandy Church, Diane Hanson and Ed Olson for answering the call to serve as teachers or subs as we seek to learn together with our younger siblings in Christ.
- To Bev & Gary Larson, Hana Smith, Emilee & Brianna Swanson, Mason Holleman, Elsa Erickson, and Aiden & Xavier Butler and their families for putting together the Dec Praise Program to rejoice with Mary in God our Savior.
- To Priscilla Smith, Patti Horazuk, Carolyn Ross, OJ (Orin) Jensen, Carol Glidden and Jodi Glidden who put together a phenomenal Sunday Funday event this year, and all those who volunteered the day of to serve lunch, run games/activities, and build relationships with community members who attended.

- To the many gifted individuals who offer themselves to God and neighbor in a variety of capacities including but not limited to: all who serve as worship leaders (reading, ushering, and assisting with communion), fellowship hosts, letter/card writers who share a word of support and encouragement to people near and far, those who change the paraments in the sanctuary, those who provide rides, those who helped with camp and road cleanups, those who continue to supply homemade shawls so that others may feel physically wrapped in prayer, and those who volunteer with community ministries beyond the walls of our building.

From the bottom of my heart, I extend my sincerest appreciation to God for you. For being willing to serve not only this faith community, but the One who has blessed you. My heartfelt apologies if I have missed anyone. As this likely incomplete list reveals, the life and mission of Trinity, and the wider church, happens in and through all of us, the body of Christ, the people of God who have been united by the one and same Spirit. You are a vital thread to the tapestry that the Lord is weaving and I thank you.

As we raise up thanks for all the ways we bear the illumination and presence of Jesus Christ, we especially give tremendous thanks and praise to our Creator, Redeemer, and Sustainer.

With deepest gratitude, Pastor Amanda

Annual Meeting—Jan 23

Immediately after the Sunday worship we will be having the annual meeting to vote on the Slate of officers/election, to approve the 2022 Proposed Budget, and to elect Delegates to the 2022 Synod Assembly.

**Thank
You**

Miigwech!!

Thank you for all of the Christmas cards and presents my siblings in Christ! Your love, expressed through such thoughtfulness, is a gift I treasure. Pr Amanda

January Service Groups

Date	Reader	Communion	Recorder
1/2	Bruce Ehlers	Bruce & Val Ehlers	Lon Christianson
1/9	Susan Schulz	Nicholas Freimark	Orin Jenson
1/16	Howard Hirdler	Wes Dunham	Orin Jenson
1/23	Terry Nord	Orin Jensen	Orin Jensen
1/30 healing service	Bev Larson	Bev Larson	Patti Horazuk

Ushers for January: Bev & Gary Larson

Procedure for canceling worship

In the event that there is extreme weather that could make it unsafe for people to travel to the church building for worship, the church will follow the steps outlined below.

- The pastor and council president will consult with each other via phone Sun morning to determine if there is a need to cancel. If the council president is unavailable, then it will follow as such: vice president, secretary, treasurer, financial secretary.
- If it is deemed necessary, then the following will occur:
 - The pastor will change the outgoing message on the answering machine no later than 2 1/2 hours before worship to inform those who call the office, post it on the church's Facebook page and website, and call KB101 FM (218-444-1011) to request that a weather-related notification be announced on their stations.
 - People are asked to check one of those four locations beforehand and pass the word along however they see fit.
- If worship is canceled, then all other ministry activities that day will also be canceled.

Financials for Trinity

November	Month	YTD
Giving	\$ 8,330	\$114,513
Actual Expenses	\$ 9,796	\$116,533
Budgeted Expenses	\$ 9,595	\$122,414



Dear Trinity,

It was a great blessing for me to be part of Trinity Lutheran's service on Sunday, November 14th. The warm and gracious welcome was genuinely appreciated.

The generous offering that was given in the amount of \$217.00 demonstrates the faithfulness of God in partnership between Trinity Lutheran and Gideons International. These funds will provide scriptures in areas served by the Gideons International, PO Box, Bemidji, MN 56619
Thank you for Trinity Lutheran's prayers and support of Gideons International.

Wayne Tieman



**Lutheran
Social Service**
of Minnesota

On behalf of LSS
and those we
serve,
thank you.

With deep gratitude,

Pastor Julie Wright

Pastor Julie Wright

Director of Church Partnerships and Volunteerism

Gift: **\$100.00 for Camp Knutson**

Date Received: 11/10/2021

A friend asked "So now that you are retired, what inspires you to get out of bed in the morning?" "Mostly, it's my bladder."

Did you ever stop to think that before the invention of the crowbar, crows had nowhere to go drinking?

What is heavier fluid, diesel or butane? The diesel, of course. After all, butane is a lighter fluid.

!!Thank you!!

Thank you Laurie Buehler, Mary Nord and Pam & Tom Shepherd for your wonderful work in making the Advent season a time and space where we encountered the Holy One's presence in the gift of darkness.



Mental Health Corner

"O God, the strength of the weak and the comfort of sufferers: Mercifully accept our prayers, and grant to your children who suffer with mental illnesses the help of your power, that their sickness may be turned into health, and our concern into joy; through Jesus Christ our Lord. Amen" (from the *National Alliance on Mental Illness*)



Tip

A study done for the Minnesota Department of Commerce (DOC) finds that Minnesota can economically get 70 percent of its electricity

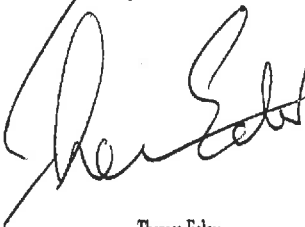
from renewable sources as prices for wind, solar and battery storage continue to fall. The Solar Potential Analysis Report for DOC was funded by the U.S. Department of Energy, commissioned in response to a 2013 Minnesota law that set a goal of getting 10 percent of Minnesota's electricity from solar by 2030. Minnesota is a leading state for wind power, getting at least 18 percent of its electricity from wind turbines, according to state and federal data. The study predicts that Minnesota's grid in 2050 could reliably deliver power from a generation base of 30 percent fossil fuels and 70 percent renewables. ENCOURAGE policy makers to continue moving Minnesota toward clean, renewable Minnesota-generated power.

Community Collaboration

As you may recall we had a gathering of Cass Lake community members back in Nov. Concerns were voiced, ideas were lifted up, and connections were made. It was decided perhaps a Thrift Shop might be a good avenue to explore further. Not only would this offer Cass Lake residents easier access to goods such as clothing, but it would be a wonderful way people can invest in the community. We recognized that Cass Lake has slowly been in decline and that people who work here end up spending their money in other towns such as Bemidji and Grand Rapids. We asked why can't the money be reinvested back into the neighborhood instead? This of course would be a significant undertaking. There was, however, excitement about the possibilities. A big part of the reason for holding such a gathering was to build relationships. Individually and collectively we have varied gifts that contribute to the whole. In the course of our conversation, we discovered that there are resources that can potentially be tapped. So we are inviting you again to join us as we seek to collaborate together to serve our neighbors. And bring a friend! It'll be **Tues Jan 25 @ 5:00 pm**, location to be determined.

Thank you from Faith in Action Cass County for Trinity's donation in Dec 2021.

Learn more about the impact of Faith in Action for Cass County by viewing videos on our website at www.faithinactioncass.com/20th-anniversary-celebration.html

Thank you!

 Theresa Eckov

Total	\$100.00
--------------	-----------------



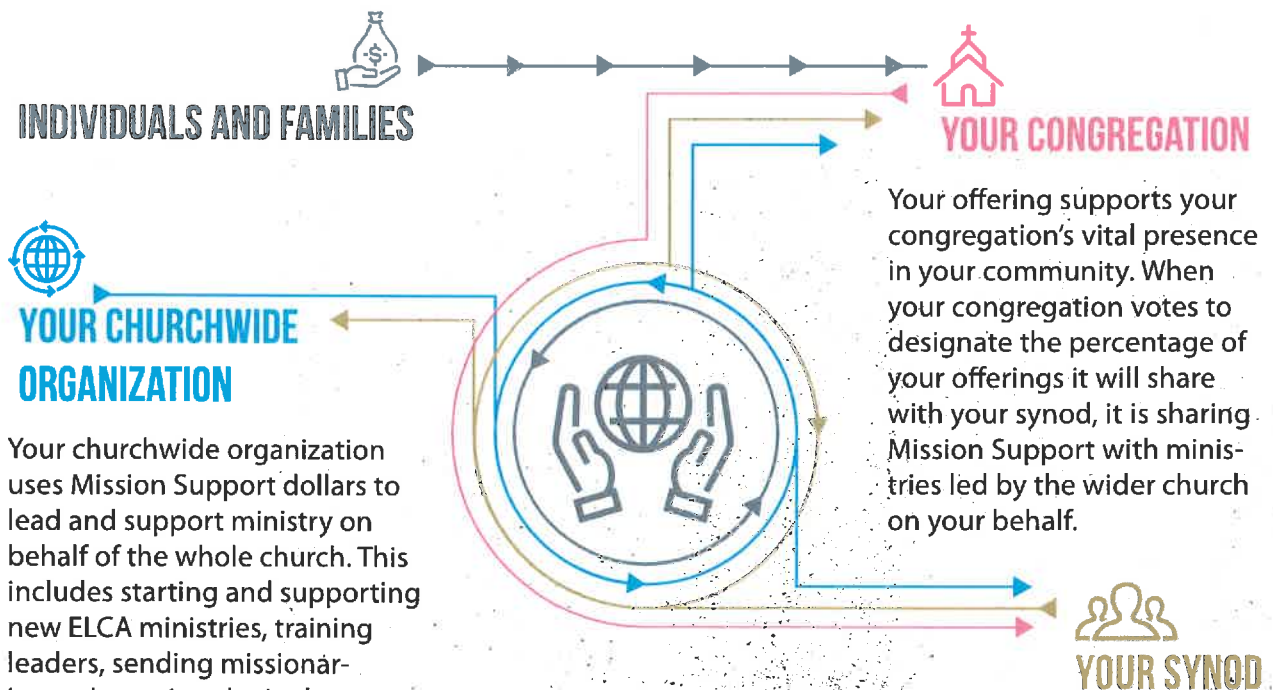
HOW YOUR OFFERING BECOMES MISSION SUPPORT

As Lutherans, we believe that Christ has freed us from sin and death, and even from ourselves, so that we can love and serve our neighbors. One way we turn our faith into action is by making a financial gift — an offering — to our congregation.

Each year, ELCA congregations pledge to send a portion of their offerings to fund ELCA ministries in their synods and beyond. We call these funds Mission Support.

Mission Support enables the ELCA's more than 8,900 congregations and 65 synods to pool resources to love and serve our neighbors in ways that no individual or congregation can do alone. Mission Support is one way we are church together — it's essential to who we are as the ELCA. Through Mission Support, we expand our participation in God's life-changing work in our communities and around the world.

HOW MISSION SUPPORT FUNDS MINISTRY ACROSS OUR CHURCH



Your churchwide organization uses Mission Support dollars to lead and support ministry on behalf of the whole church. This includes starting and supporting new ELCA ministries, training leaders, sending missionaries and growing the Lutheran church nationally and globally.

Your offering supports your congregation's vital presence in your community. When your congregation votes to designate the percentage of your offerings it will share with your synod, it is sharing Mission Support with ministries led by the wider church on your behalf.

Your congregation's Mission Support dollars are stewarded by your synod's leaders to nurture and equip ELCA congregations and rostered ministers. Synods support area ministry partners — camps, colleges, seminaries and more — and build relationships with global-companion churches. Synods designate a portion of the Mission Support funds they receive from congregations to be shared with the churchwide organization for ministries across our church.



2020 FINANCIAL PICTURE

In 2020, ELCA members gave **\$1.7 billion** in unrestricted offerings* to support God's mission and ministry through the three expressions of the ELCA. Thank you for your generosity!

94.7% — CONGREGATIONS

\$1.6 billion was stewarded by over 8,900 ELCA congregations.
\$90.2 million was shared by congregations as Mission Support.

2.9% — SYNODS

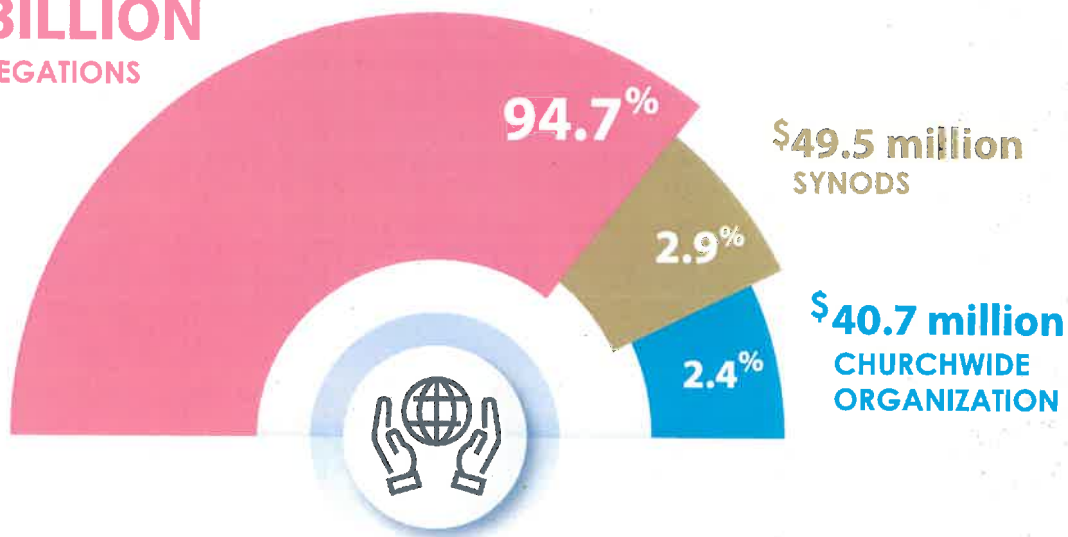
\$49.5 million in Mission Support was stewarded by the ELCA's 65 synods.

2.4% — CHURCHWIDE ORGANIZATION

\$40.7 million in Mission Support was stewarded by the ELCA churchwide organization.

**Unrestricted offerings do not include special offerings (e.g., congregational capital improvements or gifts to ministries such as Lutheran Disaster Response or ELCA World Hunger).*

\$1.6 BILLION
CONGREGATIONS



Read on for stories of faith in action —
made possible by Mission Support!